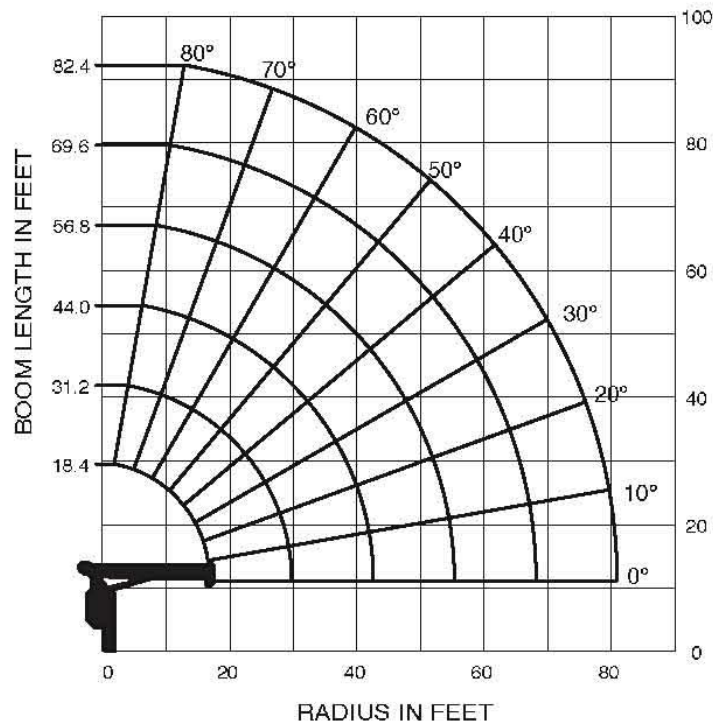


TM-1882 (18 ton) crane capacity

WORKING RANGE



The above lifting heights and boom angles are based on a straight (unladen) boom, and allowance should be made for boom deflection obtained under laden condition.

NOTE:

- 1) Rated lifting capacities on this chart show maximum allowable loads with outriggers properly extended on a firm surface and the crane leveled and mounted on a factory recommended truck. The rated lifting capacities in shaded areas are based on crane strength and others, on its stability (not to exceed 85% of tipping).
- 2) The weight of handling devices such as hook block, slings, etc., must be considered part of the load and must be deducted from the rated lifting capacities.
- 3) Weights of any accessories attached to the boom or load line must be deducted from the rated lifting capacities.
- 4) The operator must reduce loads to allow for such factors as wind, ground conditions, operating speed and the effects of freely suspended loads such as boom deflection.
- 5) For full capacity 360° around the truck, the chassis requires the front stabilizer (ex. rear mounted) and additional counterweight in the underside of the bed.
- 6) For boom lengths or radius not shown, use the rated lifting capacity of next longer boom lengths or radius.
- 7) For boom lengths longer than 31.2 ft., extend outriggers to max. or mid.
- 8) For boom lengths longer than 56.8 ft., extend outriggers to max.
- 9) 56.8 ft. boom means 1st mark on 4th boom section side plate is half visible.
- 10) 69.6 ft. boom means 2nd mark on 4th boom section side plate is half visible.
- 11) Winch wire rope: diameter × length 9/16" × 279', breaking strength 30,100 lbs.
- 12) Keep at least 3 wraps of loadline on winch drum.
- 13) Maximum load for number of part lines is as shown below.
- 14) Part of lines are:



No. of part lines	1	2	4	5
Max. of load	7,200 lbs.	14,400 lbs.	28,800 lbs.	36,000 lbs.

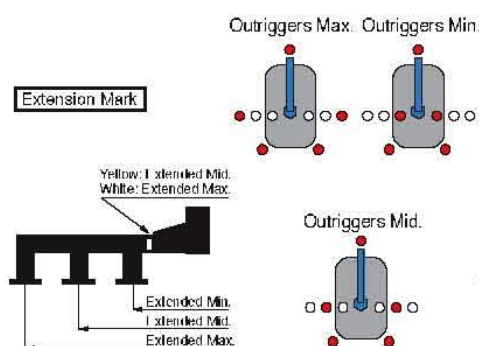
RATED LIFTING CAPACITY (IN POUNDS)

Load radius (ft.)	18.4 ft. Boom			31.2 ft. Boom			44 ft. Boom		56.8 ft. Boom		69.6 ft. Boom		82.4 ft. Boom		Load radius (ft.)					
	Loaded Boom Angle	Outriggers Extended			Loaded Boom Angle	Outriggers Extended			Loaded Boom Angle	Outriggers Extended		Loaded Boom Angle	Outriggers Extended							
		Max.	Mid.	Min.		Max.	Mid.	Min.		Max.	Mid.		Max.	Mid.						
5	75°	36,000	30,000	22,000											5					
8	64°	23,000	23,000	15,200	76°	17,450	17,450	13,200							8					
10	57°	19,350	19,350	10,100	73°	17,450	17,450	8,750	79°	17,450	17,450				10					
12	48°	16,550	16,550	7,400	69°	15,600	15,600	6,350	76°	14,650	14,650				12					
14	38°	14,550	14,550	5,650	64°	13,650	13,650	4,800	73°	12,750	12,750	80°	9,050	9,050	14					
16	24°	13,000	12,700	4,500	60°	12,300	11,600	3,750	70°	11,500	11,000	76°	9,050	9,050	80°	9,050	16			
20					51°	10,000	7,700	2,350	65°	9,400	7,700	72°	8,450	7,700	77°	7,300	79°	4,200	20	
25					36°	8,100	4,950	1,300	57°	7,600	4,950	66°	6,900	4,950	72°	6,000	76°	4,200	25	
30									48°	6,250	3,350	61°	5,650	3,350	68°	5,100	73°	4,200	30	
35									38°	5,050	2,400	54°	4,800	2,400	63°	4,300	69°	3,800	35	
40									23°	3,800	1,650	47°	3,800	1,650	58°	3,700	65°	3,300	40	
45												39°	3,400	1,150	53°	3,150	61°	2,900	45	
50												29°	2,700	900	47°	2,750	57°	2,500	50	
55															41°	2,300	52°	2,150	55	
60															33°	2,000	47°	1,900	60	
65															22°	1,600	42°	1,600	65	
70																	35°	1,350	70	
75																	28°	1,200	75	
80																	14°	850	80	
	0°	8,400	8,400	4,050	0°	3,950	3,400	600	0°	1,850	1,300	0°	1,100	700	0°	600	0°	350		
		(16.89ft.)				(29.69ft.)				(42.48ft.)			(55.28ft.)			(68.07ft.)			(81.33ft.)	

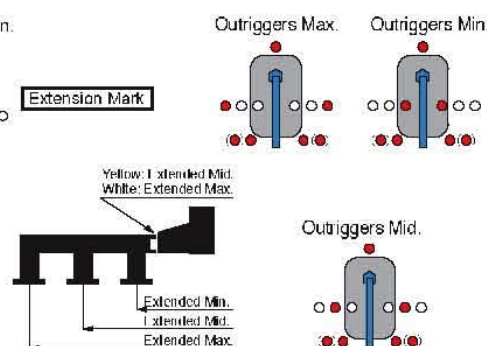
Notice: The chart is only for reference and should not be used for operation.

Maintain a clearances at least 10 feet between any part of the crane, load line or load and any electrical line carrying up to 50,000 volts. One-foot additional clearance is required for every additional 30,000 volts or less.

<TRACTOR MOUNTED>



<CAB BACK MOUNTED>



<REAR MOUNTED>

